

# Schwörer Haus

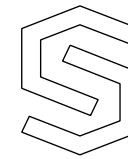
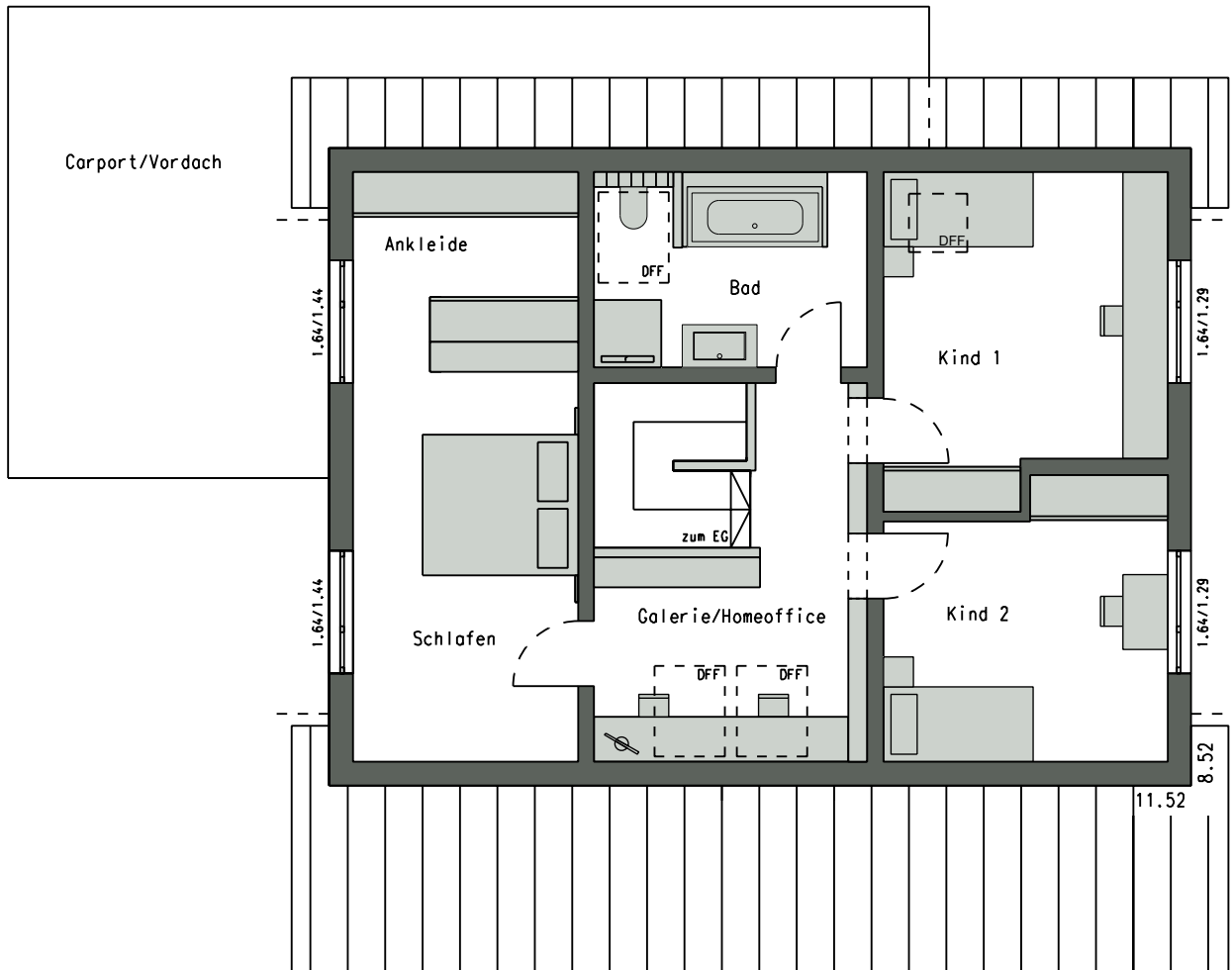
Pressedoku Musterhaus "AENNE"-kleiner  
 E 15-155.4  
 Erdgeschossgrundriss

Berechnung Nettogrundfläche/Wohnfläche

|              |          |          |
|--------------|----------|----------|
| Küche/Essen  | 22.77 qm | 22.77 qm |
| Wohnen       | 15.14 qm | 15.14 qm |
| DU/Bad       | 4.06 qm  | 3.87 qm  |
| WF           | 5.64 qm  | 5.64 qm  |
| Flex Bereich | 18.63 qm | 14.13 qm |
| Technik      | 7.81 qm  |          |
| Abst.        |          | 1.85 qm  |
|              | <hr/>    | <hr/>    |
|              | 74.05 qm | 63.40 qm |

- E15\_155\_4\_43025\_Aenne  
 - e1

1 Unterzug



# Schwörer Haus

Pressedoku Musterhaus "AENNE"-kleiner

E 15-155.4

Dachgeschossgrundriss  
DN 32 Grad + 165 KN

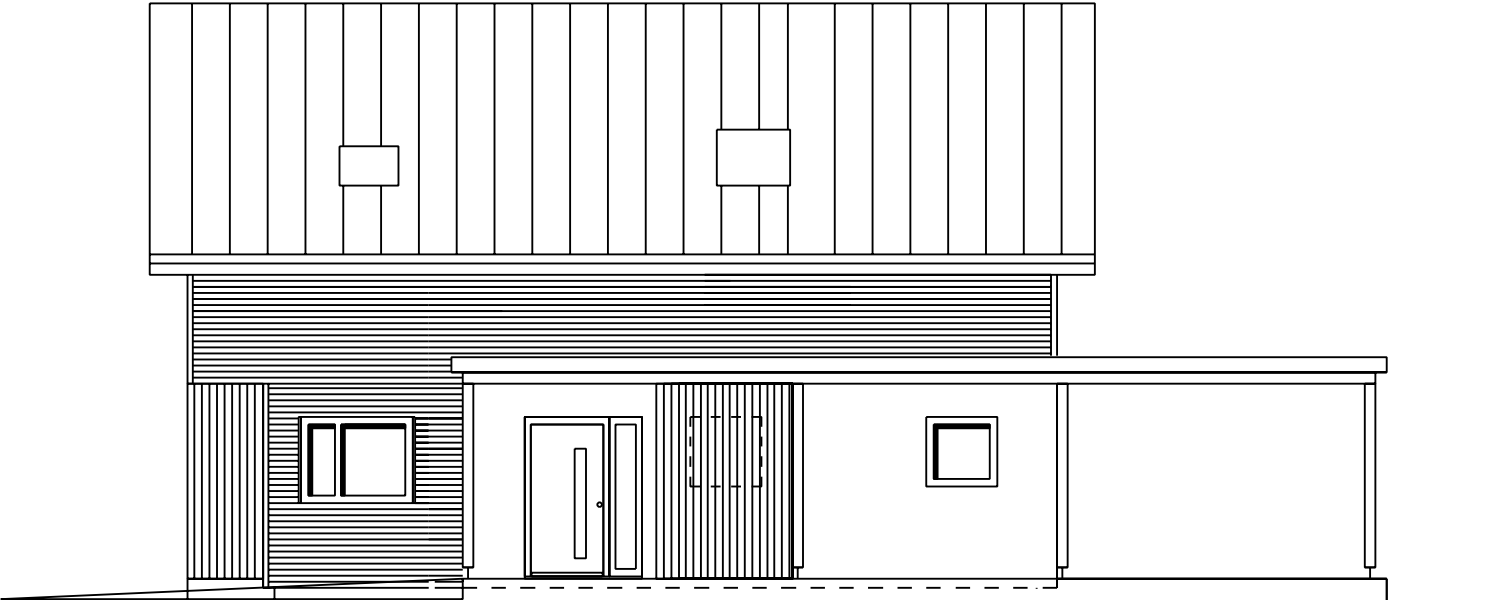
Berechnung  
Nettogrundfläche (nach DIN 277)/Wohnfläche

|          |          |          |
|----------|----------|----------|
| Schlafen | 23.73 qm | 21.80 qm |
| Bad      | 9.54 qm  | 8.18 qm  |
| Kind 1   | 15.88 qm | 14.66 qm |
| Kind 2   | 13.36 qm | 12.14 qm |
| Galerie  | 17.94 qm | 12.35 qm |
|          | <hr/>    | <hr/>    |
|          | 80.45 qm | 69.13 qm |

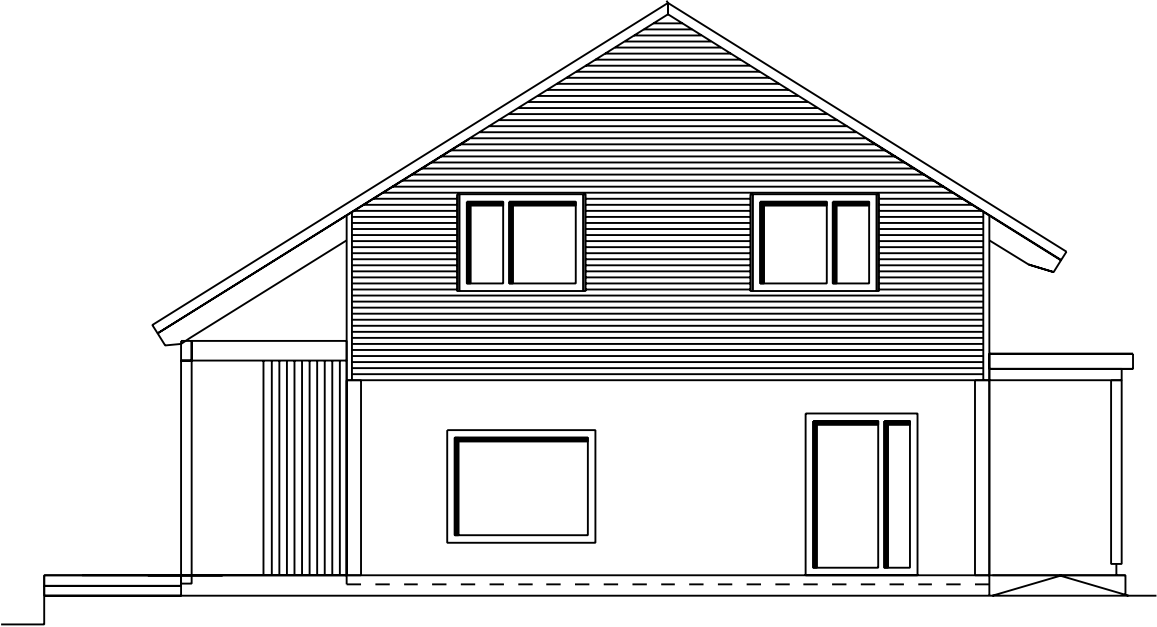
- E15\_155\_4\_43025\_Aenne

- d1

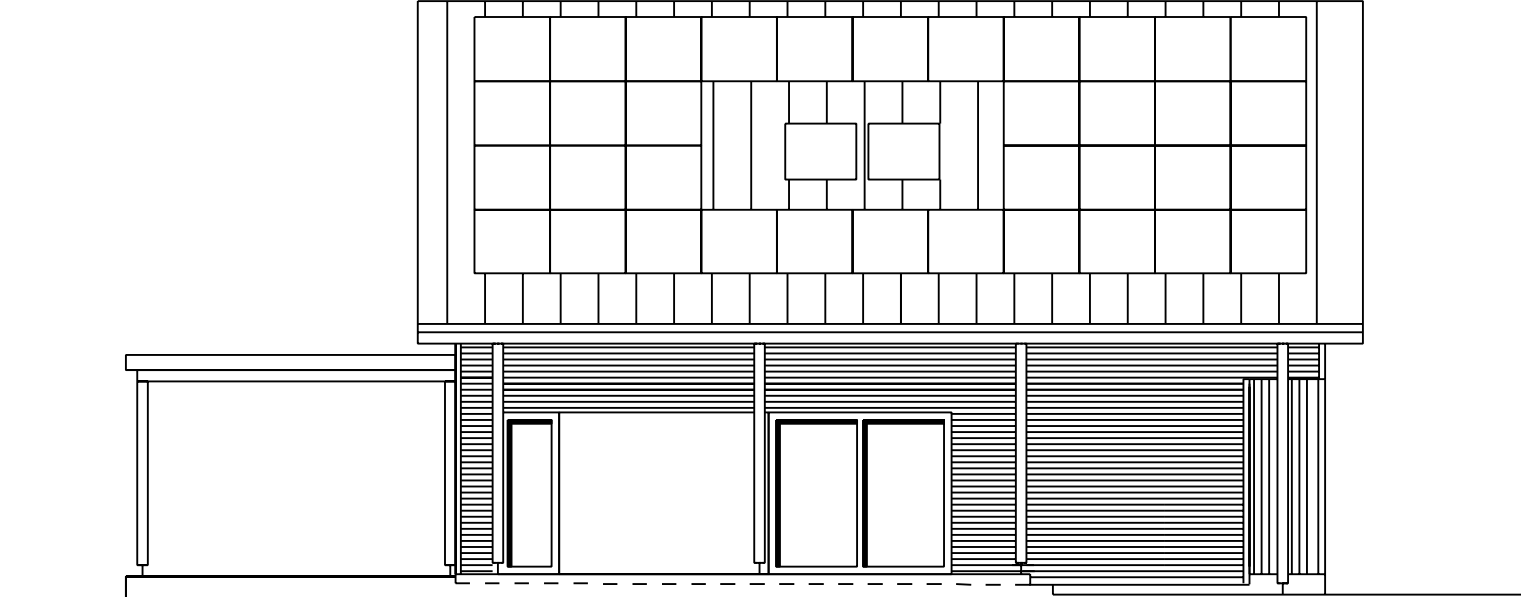
DFF 94/1.40 78/98



NORDEN



OSTEN



SÜDEN

